



**AC 900**  
**802.11ac/n/a**

# 5GHz 867Mbps Outdoor 802.11ac 23dBi Dish Wireless Bridge/CPE

**WIS-D523AC**

**Version 1.0**

**Wisnetworks Technologies Co., Ltd.**

Sales e-mail: [info@wisnetworks.com](mailto:info@wisnetworks.com) Web: [www.wisnetworks.com](http://www.wisnetworks.com)

Address: No.77, FuTe West 3 Road, China (Shanghai) Pilot Free Trade Zone

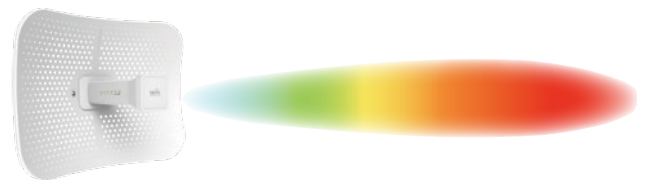
# Product Overview

WIS-D523AC is a 867Mbps 2\*2 MIMO outdoor wireless dish bridge for long range point-to-point and point-to-multi-point solutions. It is the most cost-effective and ultimate solution for WISP CPE, which provides incredible long range much better than any other vendors solution.

## Features

### Incredible Long Range

- Up to 25dBm Tx Power
- Dish Antenna Gain 23dBi
- Radio-in-Feed design reduces cable loss
- Narrower Beamwidth for noise immunity



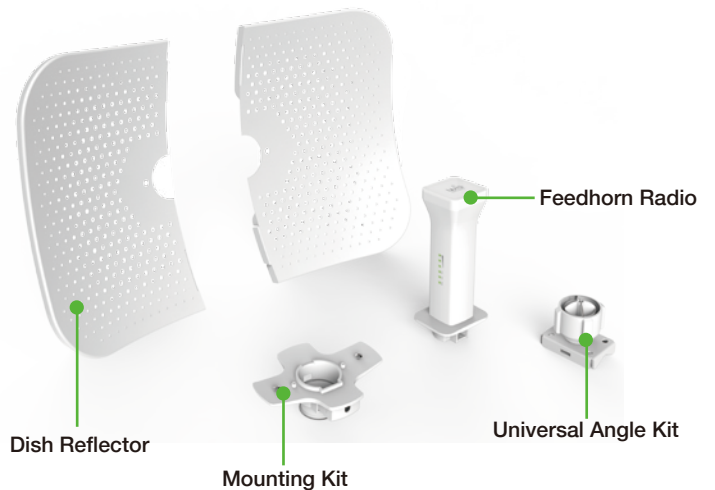
WIS-D523AC



Other CPE

### Revolutionary Design

- Disassembled Dish Design
- 360 Universal Antenna Alignment
- IP66 Waterproof



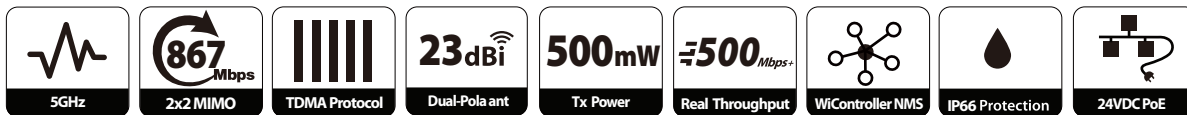
### Full Feature & Performance

- Full WisOS Support
- Auto-Distance Adjust
- Fully Managed by WiController
- 

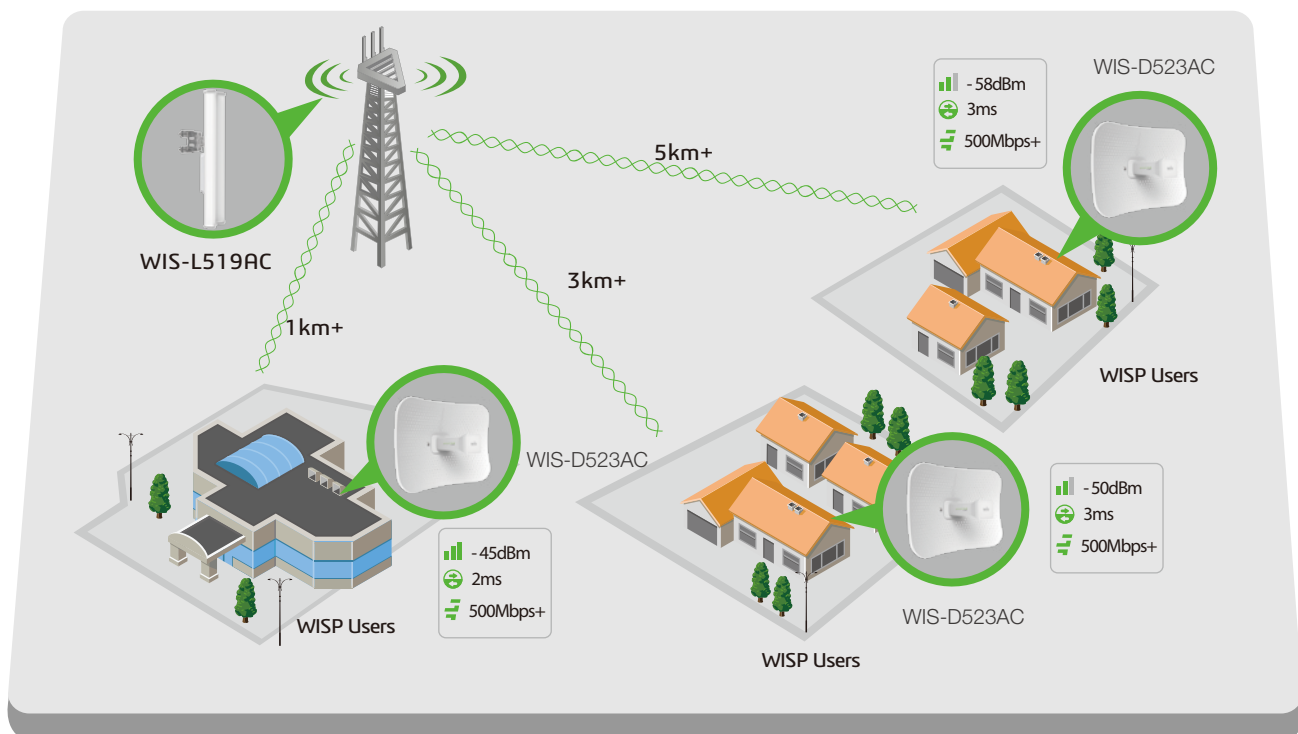


## Features and Benefits

- Compliant with 802.11 ac/n/a, speed up to 867Mbps
- 23dBi dual-polarized dish antenna to build robust long range wireless PtP link
- High output transmission power and receive sensitivity optimized
- 80/40/20MHz selectable for channel bandwidth
- Easy deployment and adjustment with provided mounting kits
- Managed with web interface or by NMS WiController
- Passive POE(24VDC) for flexible deployment
- Weather-proof design for outdoor environment
- Up to16kV ESD protection



## Network Diagram



# Specification

## > Radio

- 802.11ac/n/a radio (Atheros 775MHz)
- Speed up to 867 Mbps
- Frequency Range: 5.150-5.250GHz  
5.250-5.350GHz  
5.470-5.725GHz  
5.725-5.825GHz
- Tx Power 27dBm±2
- Rx Sensitivity 867Mbps: -67dBm@10% PER  
300M: -74dBm@10% PER  
54M: -78dBm@10% PER  
1M: -98dBm@10% PER

## > Antenna

- 23dBi dual-polarized dish antenna
- Beamwidth(HPBW) Horizontal: 10°, Vertical: 10°
- Open space up to 1~10km (dependent)

## >Physical Parameters

- Dimension: 350\*270\*255mm
- Wight: 3kg
- Feedhorn enclosure: ASA Weatherproof
- ESD Protection: 16kV
- Working Temp: -40 ~ 70°C
- Storage Temp: -40 ~85°C
- Working Humidity: 10%~95% non-condensing

## > Power

- 24VDC, 0.75A
- Power Consumption: 6W

## >Security

- Integrated Firewall
- WPA/WPA2;WPA-PSK/WPA2-PSK (AES/TKIP) Encryption; 64/128-bit WEP;

## > Interfaces

- 1x 10/100/1000 Base-T Ethernet (24VDC Passive PoE)

## > LED

- Power:On/Off
- LAN:On/Off/Flashing
- WLAN:On/Off/Flashing
- RSSI Signal: 1,2,3

## >Warranty

- 2 Year

## >Certification

- CE, RoHS

## >Package content

- WIS-D523AC Feedhorn Radio
- Feed Receiver
- Quick Setup Guide
- Power Adapter with Passive PoE
- Mounting bracket & kits

# Antenna Information

